

DEMAND CONTROL VENTILATION



Accessories

Silencers

To further reduce noise levels Elta's silencers are infilled with glass tissue faced high density mineral wool. The external casing is pre-galvanised sheet steel with perforated steel lining.



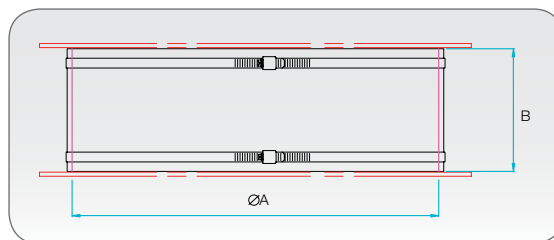
| Circular Silencers (QUBe & QUBe HT) | |
|-------------------------------------|----------------|
| SQU1 | 063-0315-*D**P |
| SQU2 | 063-0500-*D**P |
| SQU3 | 063-0560-*D**P |
| SQU4 | 063-0710-*D**P |

1, 1.5 or 2
See Dimension A

E - With Pod or
EN - Without Pod

Flexible Connectors

Fits directly to matching flanges providing a flexible connection between the fan and duct or ancillaries. Silicone coated glass fibre, supplied with plated steel band fixings.

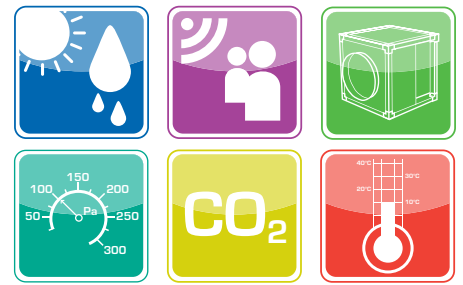


| Dimensions | ØA | B |
|------------|-----|-----|
| SQU1 | 315 | 150 |
| SQU2 | 500 | 150 |
| SQU3 | 560 | 150 |
| SQU4 | 710 | 200 |

| Flexible Connectors | |
|---------------------|-----------------|
| SQU1/4-3 | 063-0315-MAN150 |
| SQU2/4-3 | 063-0500-MAN150 |
| SQU3/4-3 | 063-0560-MAN150 |
| SQU4/#-3 | 063-0710-MAN150 |

| Flexible Connectors (HT) | |
|--------------------------|----------------|
| SQU1/4-3HT | 063-0315-SC250 |
| SQU2/4-3HT | 063-0500-SC250 |
| SQU3/4-3HT | 063-0560-SC250 |
| SQU4/#-3HT | 063-0710-SC250 |

• All dimensions are in mm
Elta Fans Limited has a policy of continuous product development and improvement and therefore reserves the right to supply products which may differ from those illustrated and described in this publication. Confirmation of dimensions and data will be supplied on request.

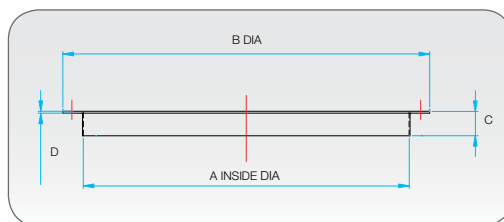


DEMAND CONTROL VENTILATION



Matching Flange

Provides easy connection to flexible connector or ducting. Hot dipped galvanised steel.



| Product Code | Fan Dia. A | B | C | D | Weight kg |
|--------------|------------|-----|----|-----|-----------|
| 061B-0315 | 315 | 375 | 30 | 1.5 | 0.7 |
| 061B-0500 | 500 | 585 | 45 | 2.0 | 2.2 |
| 061B-0560 | 560 | 645 | 45 | 2.0 | 2.4 |
| 061B-0710 | 710 | 795 | 45 | 2.0 | 3.0 |

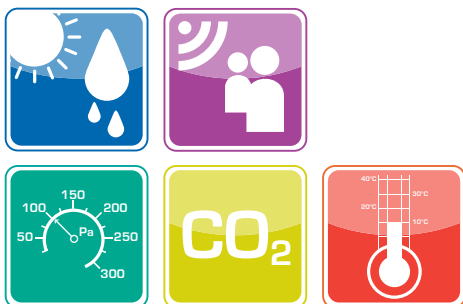
Inverters

Variable Speed Drives, also known as Inverters, are now a common feature in the control of ventilation fans. The main reasons for this are cost savings through reduction in energy usage at reduced fan speeds and the ability to control the fan via sensors such as humidity, temperature and pressure to offer demand control ventilation.



| Inverters QUBe & QUBe HT | 1Ph / 3pH Inverters | | 3Ph / 3Ph Inverters | |
|-----------------------------|-----------------------|-----------------------|-----------------------|-----------------------|
| | IP55 | IP20 | IP55 | IP20 |
| SQU1 | 149-ODE-2-12037-1KB1S | 149-ODE-2-12037-1KB12 | 149-ODE-2-14075-3KA1S | 149-ODE-2-14075-3KA12 |
| SQU2 | 149-ODE-2-12075-1KB1S | 149-ODE-2-12075-1KB12 | 149-ODE-2-14075-3KA1S | 149-ODE-2-14075-3KA12 |
| SQU3 | 149-ODE-2-12151-1KB1S | 149-ODE-2-12150-1KB12 | 149-ODE-2-14150-3KA1S | 149-ODE-2-14150-3KA12 |
| SQU4/4 | N/A | N/A | 149-ODE-2-24400-3KA4S | N/A |
| SQU4/6 | 149-ODE-2-22220-1KB1S | 149-ODE-2-22220-1KB12 | 149-ODE-2-24220-3KA4S | 149-ODE-2-24220-3KA12 |

DCV Controls



DEMAND CONTROL VENTILATION

| DVC Controls (QUBe & QUBe HT) | |
|-------------------------------|-----------------------------|
| 149-DCV-CBL10 | 10m Long Cable |
| 149-DCV-CO2 | CO ₂ Transmitter |
| 149-DCV-DPT150 | Pressure Transmitter |
| 149-DCV-H1 | Room Humidistat |
| 149-DCV-HRT | Humidity Transmitter |
| 149-DCV-PIR | Presence Detector |
| 149-DCV-TRT | Temperature Transmitter |
| 149-DCV-POT | Potentiometer |

• All dimensions are in mm
 Elta Fans Limited has a policy of continuous product development and improvement and therefore reserves the right to supply products which may differ from those illustrated and described in this publication. Confirmation of dimensions and data will be supplied on request.