



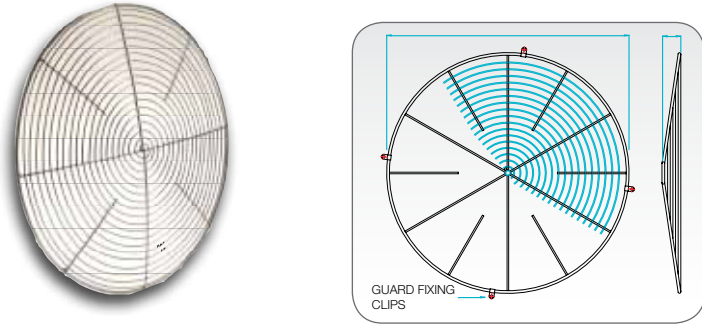
DEMAND CONTROL VENTILATION



Accessories

Impeller Guards

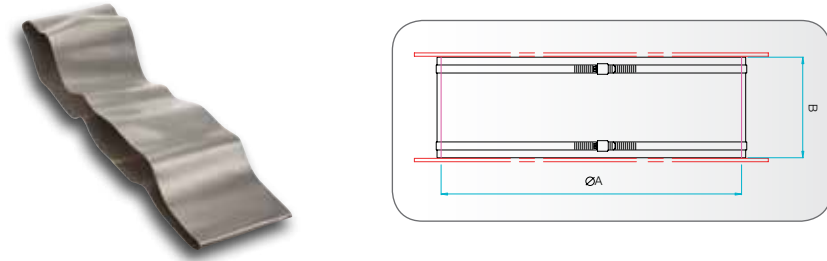
Bright zinc plated steel or galvanised, Fix with clips & screws (included).



Product Code	Fan Dia.	A	B	Weight kg
078C-0450-C	450	470	29	1.8
078C-0500-C	500	520	32	2.2
078C-0560-C	560	585	32	2.5
078C-0630-C	630	655	40	2.6

Flexible Connectors

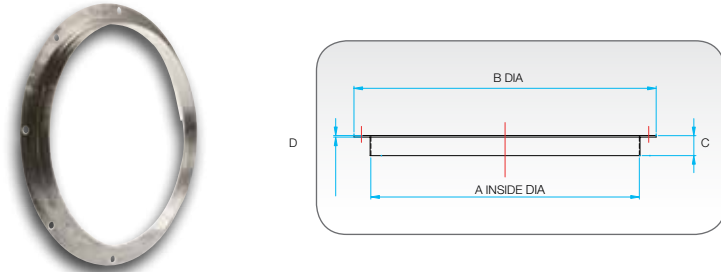
Fits directly to matching flanges providing a flexible connection between the fan and duct or ancillaries. Silicone coated glass fibre, supplied with plated steel band fixings.



Product Code	Fan Dia. A	B	Weight kg
063-0450-PU250	450	150	1.1
063-0500-PU250	500	150	1.2
063-0560-PU250	560	150	1.3
063-0630-PU250	630	200	1.4

Matching Flange

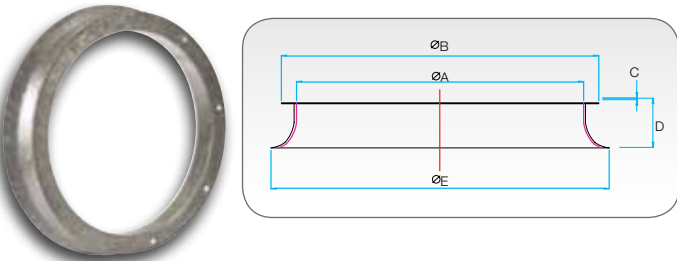
Fits directly to the fan case flange and provides easy connection to flexible connector or ducting. Hot dipped galvanised steel.



Product Code	Fan Dia. A	B	C	D	Weight kg
061B-0450	450	530	40	1.5	2.2
061B-0500	500	585	45	2.0	2.6
061B-0560	560	645	45	2.0	3.0
061B-0630	630	715	45	2.0	3.4

Bell Mouth Inlets

Fits directly onto the fan case flange to improve inlet airflow for end of duct applications. Hot dipped galvanised steel.



Product Code	Fan Dia. A	B	C	D	E	Weight kg
241B-0450-BELL	450	535	3	85	570	5.3
241B-0500-BELL	500	585	3	93	630	6.2
241B-0560-BELL	560	645	3	105	700	7.5
241B-0630-BELL	630	715	3	105	780	9.0

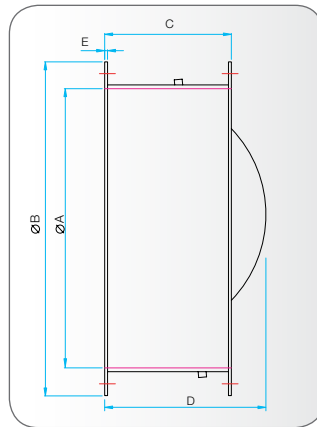


DEMAND CONTROL VENTILATION



Non Return Dampers

Fixed direct to fan case flange to prevent reverse flow of air when the fan is not operating. Standard damper (STD) suitable for horizontal or vertical (upward airflow) installation, Counter balanced (CB) option is available for vertical (downward airflow) installation. Hot dipped galvanised steel casing and galvanised steel butterfly type blades.

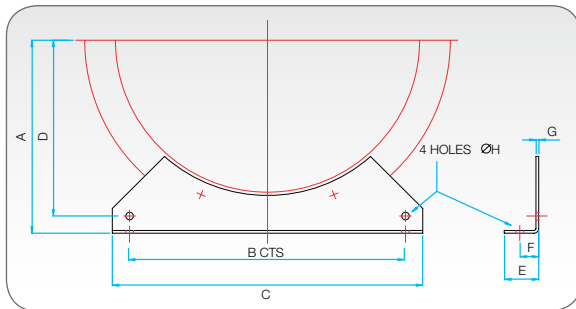


Product Code	Fan Dia. A	B	C	D	E	Weight kg
019-0450-STD	450	530	220	280	3.0	15
019-0500-STD	500	585	220	315	3.0	17
019-0560-STD	560	645	220	375	3.0	20
019-0630-STD	630	715	250	420	3.0	25

Note: Per DW/172 Non Return Dampers should not be used for kitchen extract systems.

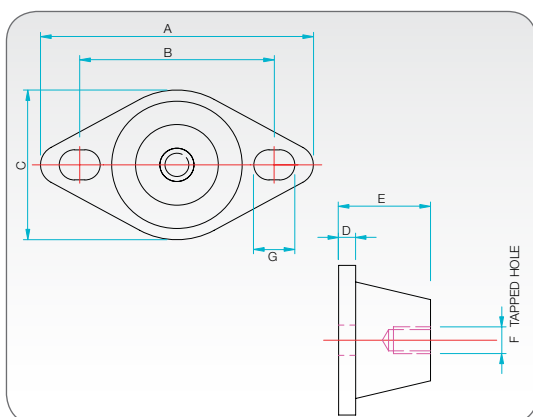
Mounting Feet

For free standing mounting of ducted fans, fit directly into fan case flange. Hot dipped galvanised steel.



Product Code	Fan Dia.	A	B	C	D	E	F	G	H	Weight kg
060B-0450	450	280	400	450	255	50	27.5	4	11	2.0
060B-0500	500	315	450	500	290	50	27.5	4	11	2.5
060B-0560	560	355	510	560	330	60	32	5	11	4.0
060B-0630	630	400	580	630	375	60	32	5	11	5.0

AV Mounts



Product Code	A	B	C	D	E	F	G	Weight kg	Load Weight kg (Min)	Load Weight kg (Max)
05.103	64	50	43	5.5	20	M6	Ø7	0.04	1	9
19.100	80	57	45	5	32	M8	12 x 9	0.11	28	80
19.101	95	71	60	5	45	M10	14 x 9	0.25	110	280
19.102	150	115	86	6	70	M12	22 x 11	0.73	150	400

All dimensions are in mm
 Elta Fans Limited has a policy of continuous product development and improvement and therefore reserves the right to supply products which may differ from those illustrated and described in this publication. Confirmation of dimensions and data will be supplied on request.